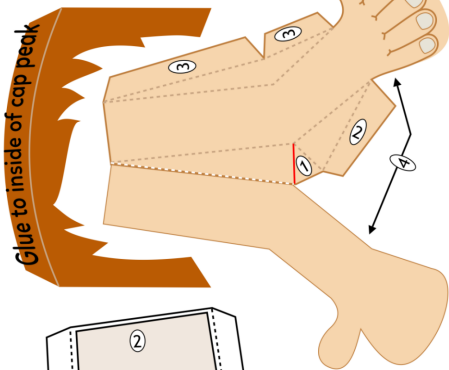
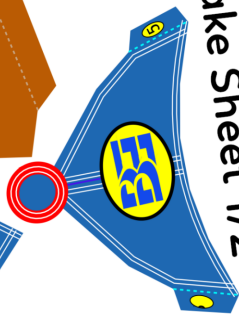
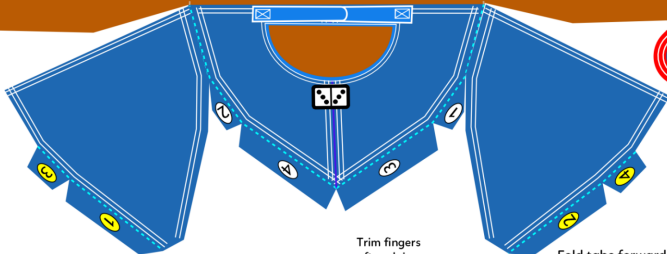
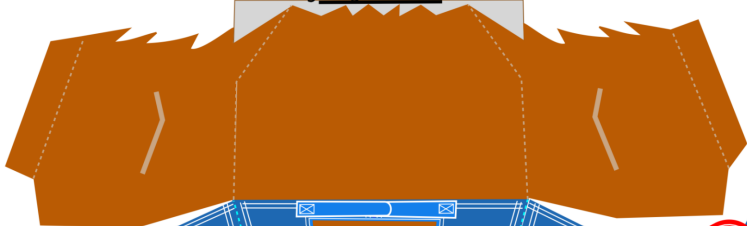


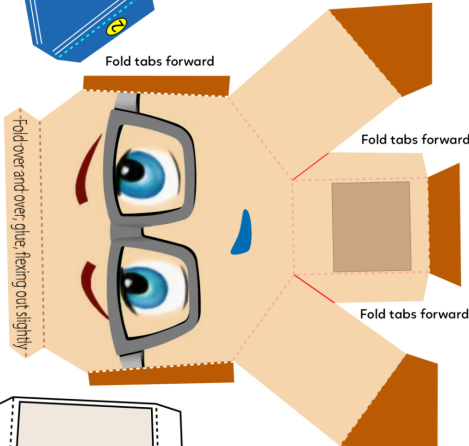
Trim back hair after gluing the tabs at the bottom of the face

Blake Sheet 1/2



Trim fingers after gluing

Glue to inside of cap peak

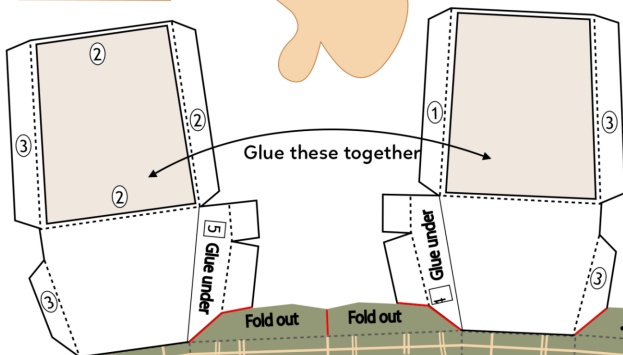


Fold tabs forward

Fold tabs forward

Fold tabs forward

Fold over and over, glue, trimming out slightly



Glue these together

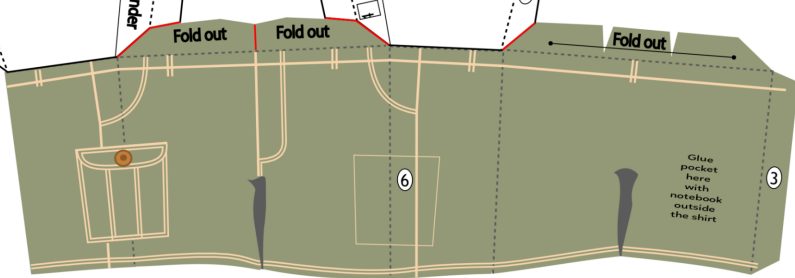
Glue under

Glue under

Fold out

Fold out

Fold out



Glue pocket here with notebook outside the shirt

3